

Visit Info.

◎ Preparatory Office of the National Human Rights Museum

Office hours : Mon to Fri, 9:00 am to 18:00 pm

Address : No.131, Fusing Rd. Xindian Dist, New Taipei City 23150, Taiwan (R.O.C)

◎ Green Island Human Rights Memorial and Cultural Park

Address : No.20, Jianguyuan, Green Island Township, Taitung County 95142, Taiwan (R.O.C)

Tel:+886-89-671095

Park Hours: Mon to Sun 9:00am to 17:00pm

Admission: Free

◎ Jing-Mei Human Rights Memorial and Cultural Park

Address : No.131, Fusing Rd. Xindian Dist, New Taipei City 23150, Taiwan (R.O.C)

TEL:+886-2-22182438

Park Hours: Tue to Sun 9:00am to 17:00pm

Admission : Free

Service

◎ Green Island Human Rights Memorial and Cultural Park

Regular guided tour :

May to Sep : 8 sessions a day, 08:30am to 11:30am (every hour)
14:00pm~17:00pm(every hour)

Oct to Apr : 6 sessions a day , 08:30am to 10:30am (every hour) :
14:00pm~16:00pm(every hour)

Reservation for groups of 10 or more :

+886-89-671-095 (Please reserve in advance)

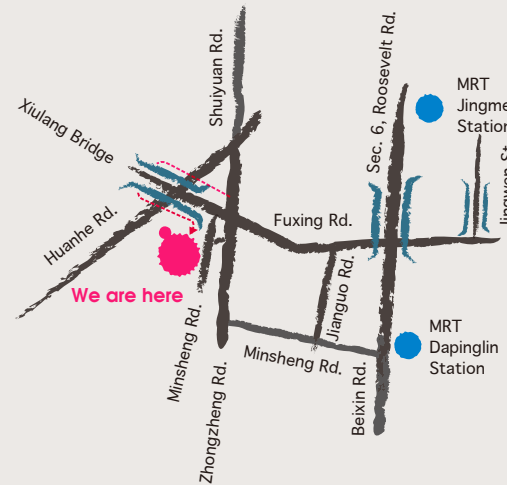
◎ Jing-Mei Human Rights Memorial and Cultural Park

Regular guided tour :

2 sessions a day, 10:30am, 14:30pm

Reservation for groups of 10 or more :

+886-02-8219-2692 (Please reserve in advance)



How to get here

By foot

Take MRT to Dapinglin Station, use Exit 1 → Min-Chuan Rd. → Turn right on Jian-Guo Rd. → Turn left on intersection of Fuxing Rd. → proceed to Xiulang Bridge for 10mins, the office is beside the bridge.

By bus (to Juang Jing Vocational High School Bus Stop)

Available bus lines include : 290, 672, 673, 905, 906, 909, 918, 1073, Green2, Green 3, Green 5, Green 6, Green 8, Green 10.

By MRT and bus

- (1)Take MRT to Dapinglin Station, use Exit 1 → transfer to bus 918, Green3, Green 8 to Juang Jing Vocational High School Bus Stop.
- (2)Take MRT to Dapinglin Station, use Exit 4 → transfer to Green10 to Juang Jing Vocational High School Bus Stop.

By car

Exit National Highway 3 at the Ankang Interchange → turn left (north) on Huanhe Rd. → proceed on the right to Xiyuan Rd. → turn right at the intersection of Xiulang Bridge and Fuxing Rd. to arrive at Jing-Mei Human Rights Memorial and Cultural Park.

Address | No.131, Fusing Rd. Xindian Dist,
New Taipei City 23150, Taiwan (R.O.C)

Tel | 886-2-22182438

Fax | 886-2-22182436

Website | www.nhrm.gov.tw

Facebook | www.facebook.com/JMHRI



WEBSITE



FACEBOOK



Who we are:

The Preparatory Office of the National Human Rights Museum (NHRM) was established in 2011, is directly administrated by The Ministry of Culture of Taiwan (R.O.C). It has two memorial parks, one in Jing-Mei, the other in Green Island. Both are the most important historical sites of the “White Terror” era, recording the touching stories and memories of the political victims and their families. Today, the parks have become the places, which not only represent and witness the growth of democracy in Taiwan, but also provide ideal locations for promoting human rights education.



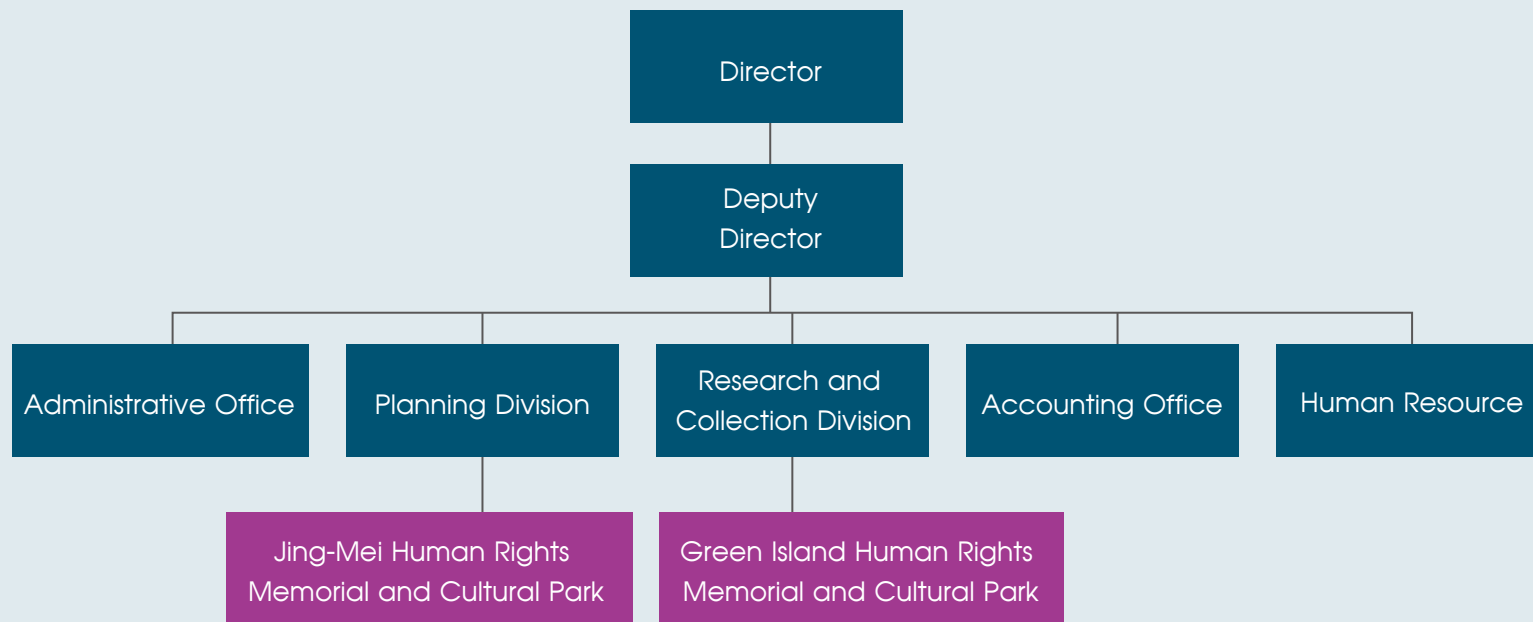
Our Targets are:

- Represent the history of the “White Terror” era
- Conserve and reinstate the historical sites in both two parks

Our Missions are:

- Research oral history of the “White Terror” era
- Collect and preserve archives of the “White Terror” era
- Reinstate the historical sites
- Promote educational programs and activities
- Exhibitions
- International exchange with human right groups and organizations

Organizational Structure of Preparatory Office of the National Human Rights Museum



Jing-Mei Human Rights Memorial and Cultural Park

Jing-Mei Human Rights Memorial and Cultural Park is located in New Taipei City. The area, approximately 3.46 hectare, is the site of the former Jing-Mei Military Law Detention Center of the Taiwan Garrison Command (1968~1987), where “political prisoners” were incarcerated, indicted and sentenced during the “White Terror” era.

The primary features of the park are:

- Conserve the historical sites
- Oral history research center
- Archive documents from the “White Terror” era
- Exhibitions



Green Island Human Rights Memorial and Cultural Park

Green Island Human Rights Memorial and Cultural Park is located in the Northeast of Green Island. The area, about 32 hectare in size, is the site of the former Ministry of National Defense Green Island Reform and Reeducation Prison (1972~1987). This is where “political prisoners” were imprisoned during the “White Terror” era.

The primary features of the park are:

- Conserve the historical sites
- Negative cultural heritage tourism center
- Oral history research facility
- Exhibitions